

Woolf-Harris New Office/Warehouse Facility on the Northshore



This March, we successfully completed the construction of an office/warehouse building in the Northshore Commercial Park for Woolf-Harris, Inc. This was a turnkey design build project that consisted of a 14,000 square foot warehouse building and an adjoining 6,000 square foot office building.

The office building features a reception area, thirteen offices, a conference room, a breakroom, and a large showroom for product displays. The finishes in the office building consist of wood, ceramic tile, and carpet flooring along with wood base and crown moulding. Each office has large glass viewing windows, and the showroom has a wood and glass storefront. The plumbing fixtures throughout the facility were supplied by Woolf-Harris, Inc. and are examples of the premium products that they supply.

The warehouse is a 25 foot tall metal building that houses a series of racks for storage of plumbing products. It is equipped with a two-bay truckwell that has hydraulic dock levelers for loading and offloading operations.

The exterior of the office building has an EIFS and masonry finish with a glass storefront entrance way. The grounds have been landscaped with over sixty trees and several large azalea beds.

Our project superintendent, Brad Yoder, put forth a lot of hard work, and we would like to thank him for his efforts in completing this project. We would also like to thank Ron Kilcrease and Jessica Larsen of REK Architects for providing the exterior and interior design services of the facility.

Featured Project:

- Woolf-Harris Office/Warehouse

Completed Projects:

- First English Lutheran Church

Current Projects:

- Center for Restorative Breast Surgery
- Visitation of Our Lady
- Mary Queen of Peace Church
- Port of Arabi/LISCO Relocation
- St. Michael's Special School

From the President

UNDER CONSTRUCTION

"The General Conditions"

First Quarter 2008

Center for Restorative Breast Surgery



F. H. Myers recently began construction on the new expansion phase of the Center for Restorative Breast Surgery on St. Charles Avenue in New Orleans. This expansion consists of the renovation of a 14,000 square foot existing historic building and the new construction of a 3-story, 23,000 square foot building that will be adjacent to it. This entire expansion will be integrated into the current facility on St. Charles Avenue, and when construction is complete, the Center for Restorative Breast Surgery will span the entire city block between Euterpe Street and Polymnia Street.

Campo Architects is facilitating the design of the project and has been instrumental in preserving the historic building façade and incorporating it with the new facility. These new facilities will provide four additional operating rooms, larger pre-op and recovery areas, CT-scan capabilities, and seventeen new patient rooms. All of the medical equipment that is being installed in the operating rooms will be state of the art, and the interior finishes of the public areas will be similar to those in an upscale hotel.

In regards to the construction of the new 3-story building, we have completed the foundation work and are currently erecting the structural steel. On the renovation portion of the historic building, we have completed all interior demolition and are in the process of installing the underground plumbing, the 2nd floor metal stud framing and the rough-in of the 2nd floor mechanical, electrical, and plumbing systems.

The construction of the new expansion phase will last until December 2008.

Visitation of Our Lady

Construction of the new 32,122 square foot multipurpose building for Visitation of Our Lady has begun. The driving of approximately 840 treated timber piles commenced on March 17th and will be completed by mid April. When pile driving is complete, we will begin setting the formwork for the foundation of the building.

Mechanical and electrical crews are poised to begin working on underground utilities, which will allow building excavation along with the placing of reinforced steel. The superstructure of the building is scheduled for delivery the week of May 5, 2008 and will be ready for erection upon completion of the building slab.

The current projected completion of the project is May 2009.



On another note, the 2008 Visitation of Our Lady Cajun Festival will be held on April 25th – 27th and will feature live music, great food, and plenty of fun and games for the kids.

UNDER CONSTRUCTION

"The General Conditions"

First Quarter 2008

Mary Queen of Peace Church



The progress on Mary Queen of Peace's new church has been outstanding over the past several weeks. The building's structure has been completely erected and now the focus is the exterior finishes and interior construction.

Once the structure was erected, the installation of the metal roof panels and exterior metal studs followed. The rigid steel frame members were then encapsulated with metal studs to create the "box-beam" feature at the Nave area's sloped ceiling. The church will have two small dormers on each side of the building along with one larger dormer at the rear wall, and each dormer will have a glazed aluminum curtainwall system with cement stucco surrounding the windows.



Interior walls have been erected and electrical and plumbing rough-in's are near completion at these walls. The four large air handling units are currently being set and ductwork installation will follow. Roof insulation has recently begun, and the electrical and sprinkler rough-in's at the Nave sloped ceiling will commence early April.

The church's exterior structural features and finishes will surely be a highlighted focal point for the building. The front entrance will consist of an arched curtainwall system surrounded by cement stucco and masonry. Groundface blocks and brick at the exterior have commenced and should be completed by the end of April. The expected completion date for this project is early August of this year.



COMPLETED PROJECTS

First English Lutheran Church



The First English Lutheran Church on Cleary Avenue in Metairie is completed, and the dedication ceremony was held Sunday, April 6th.

This new church is a multi-story building with approximately 11,000 square feet. The facility houses many historical pieces, such as the altar and the painting of the Resurrection of Christ, that date back as far as 1893. The altar, previously in another church, is composed of cypress and has been completely refurbished. Constructed in 1911, the bell in the belfry is manually operated by a rope and pulley system. There are refurbished stained glass panels, over 100 years old, which were customized into doors for the Sacristy and Vestibule area and utilized as side lights when entering the Sanctuary through the Narthex.

The exterior is constructed of Arriscraft block, modular brick with cast stone copings, classic bronze metal window frames with clear and low-e glass, copper flashings, ground accent lighting, gutters and downspouts connected to underground drainage system. The elevation to the top of the cross on the steeple is 75 feet. The steeple is constructed of aluminum and covered with asphalt shingles.



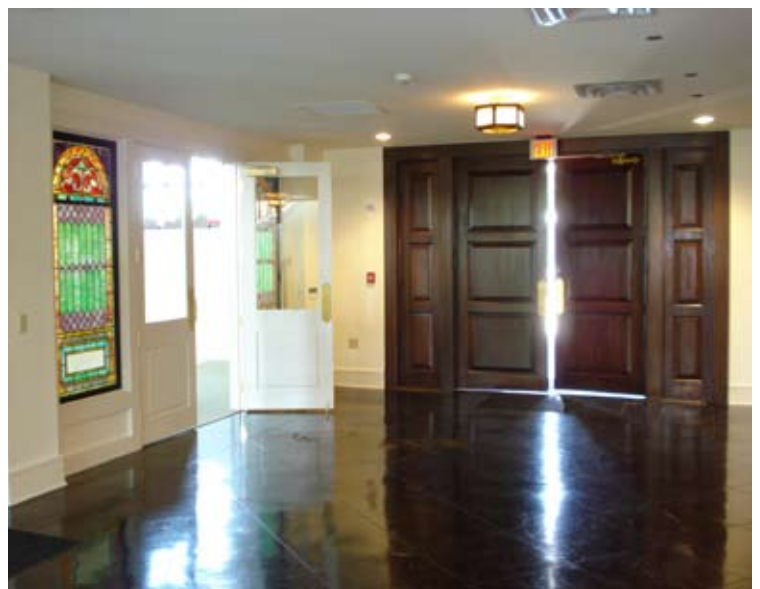
COMPLETED PROJECTS

(continued) First English Lutheran Church

Other finishes such as stained, stamped concrete at the exterior entrance leads you through mahogany doors into a stained saw-cut diamond shaped pattern on the concrete floor of the Narthex area. Straight ahead is a wooden stair case leading to the second floor. Two refurbished wooden swell frames located behind the tiered platform of the Choir Loft will house pipes in excess of twenty feet and will radiate pipe organ music throughout the worship area. The raised platform provides seating for choir members and other musicians.

The Sanctuary is accessible from any of the three sets of double doors in the Narthex. It consists of wooden pews on areas of sealed concrete and carpet. The ceiling consists of exposed stained, structural glue-laminated beams, purlins, and tongue and groove decking. Overhead suspended light fixtures and wall sconces controlled by a programmable dimmer light system and a large window behind the altar provide lighting. By turning left while in the Narthex, you will enter the administration area consisting of the Pastor's office, meeting rooms, and a food preparation area equipped with granite countertops.

We would like to thank Mr. Jim Orth of the First English Lutheran Church, Mr. John Gray of Mathes Brierre Architects, our Project Superintendent, Mr. Tom Steffek and all of the other individuals who helped make this project a success.



UNDER CONSTRUCTION

Port of Arabi/LISCO Relocation

The St. Bernard Parish Port Harbor and Terminal District has awarded the Arabi Terminal Relocation of LISCO, Maintenance Facility and Transit Shed, Phase I project to F. H. Myers Construction Corp. This is the third project that we will complete for the St. Bernard Port. This project, located at the convergence of three major maritime corridors (the Mississippi River, the Mississippi River Gulf Outlet and the U.S. Gulf Intracoastal Waterway), will add \$8M of improvements to the port. This Port provides a strategic location for expanding logistics and manufacturing operations for our region. Our firm is proud to participate in the expansion of this vital Louisiana resource.

The project's scope consists of a 73,000 square foot warehouse complete with a dust collection system, a 2,324 square foot Stacker Shed and a 2,670 square foot Boiler Foundation. The project will be supported by a 3,840 square foot Kiln foundation. The exterior shell of the warehouse will incorporate translucent wall lights. There are also ten overhead doors with concrete aprons being installed, which will be equipped for heavy machinery.

N-Y Associates, Inc., Consulting Engineers, Architects and Planners, located in Metairie, Louisiana, is the design firm for this new development. LISCO, a major importer of high-end lumber products, will utilize this



new facility to accommodate their importing needs.

F. H. Myers has successfully completed two previous projects for the Port, The Arabi Transit Shed Open Storage, completed in January, 2003 and the Arabi Terminal Dock #1 Dry Storage facility, completed in November, 2006. Both projects represent over \$9M in improvements to the Port and have provided

additional capacity to the existing maritime operations.

The contract for the LISCO Relocation project was executed in late February, 2008 and is scheduled to commence construction activities mid-March. The completion date is scheduled for early January, 2009.

St. Michael's Special School



We are excited to announce the start of a much anticipated project for St. Michael's Special School. The 11,000 square foot, eight classroom Vocational and Training Building is scheduled to be completed in early 2009. This project consists of CMU load-bearing walls and steel trusses, clad with a sure-to-be-beautiful exterior of smooth architectural brick and split-faced architectural block. An attractively designed portico will grace and welcome all visitors. The interior of the building is sure to be pleasing as well, with stained concrete floors throughout the building's entire corridor.

We at F. H. Myers Construction Corp. are extremely excited to be a part of this project and would like to thank everyone at St. Michael's Special School and the Archdiocese of New Orleans for giving us the opportunity to make an impact on the lives of all of the wonderful children at this school. We look forward to an exciting year of construction.

FROM THE PRESIDENT

"The General Conditions"

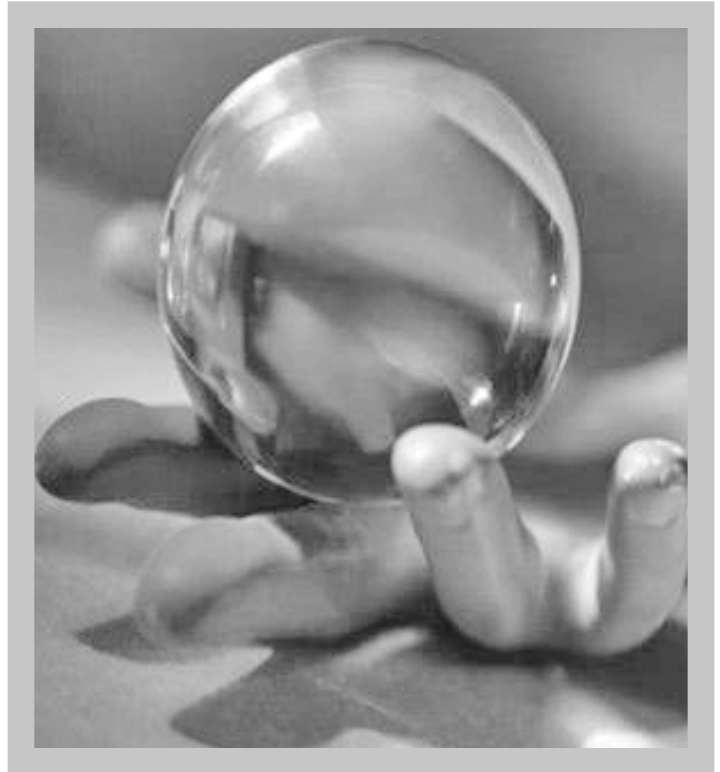
First Quarter 2008

Looking Into the Future

A new year and before you know it, we are through the first quarter. Our area is still, for the time being, reaping the benefit of re-construction.

The theme for 2007 was "postponement" as over \$25 M of work, scheduled to start in the third quarter, "slid" into 2008. Thanks to the dedicated efforts of our sales and estimating team, we were able to secure additional work and end the year on solid ground. The expectations of 2007 have become the minimum goal for 2008.

While other areas of the country are experiencing a slowdown, the commercial market remains strong in our area. We are hopeful that "the breath of fresh air" in Baton Rouge will enhance opportunities for business in our state. However, we need more than ethics reform for sustainable growth. We need a "business plan" for the state. Proactive business legislation in the second special session is a good start. The high cost of oil will accelerate work in the petrochemical industry and encourage refinery and off shore activities to increase.



The next step has to be the state infrastructure upgrades and improvements. Roads, highways, ports and airport expansions are necessary to create a means to move commerce efficiently through our state from North to South and from East to West.

The centerpiece for New Orleans' future plans is the new Veterans Administration Hospital/LSU/Tulane Medical Centers. This major development in central city will change the demographics of our city, reminiscent of the way the Superdome complex did fifty years ago. It will permit a cleansing of the central city and allow the development of apartment complexes, office buildings and specialized services that will support this medical training center.

We now have "hope". There are still challenges, but as the local political scenery changes, fresh ideas and opportunities will be created. It has taken us almost three years to get to this point, and we are probably an additional five years from the true benefits of this redevelopment.

This transition will continue to be controversial; any change is. However, we as a community must persevere. In order to build the New in our city, the old must come down and with it will go memories of the old institutions of the past. New Orleans, unlike Atlanta, Houston and other large metropolitan communities cannot expand out of our area. We are landlocked by the Mississippi River and Lake Pontchartrain. Our only opportunity is to build on top of the old! This is characteristic of what you see in major cities throughout Europe. It is not uncommon to see the remains of roman foundations under new churches built in the sixteenth and seventeenth centuries.

We need to get past "business as usual". If our city ever had an opportunity, it is now. If we miss it we will be locked in the past forever.



WELCOME

Quality and Integrity by Professionals

Home | Company Profile | Projects | Employment | Contacts | News & Info | Resources | Featured Project

Building satisfaction from the ground up

**Ask the clients, architects, and engineers
we've worked with since 1987.**

From day one we've made a conscious effort to make every project a pleasurable experience for each of our clients. It's simply a matter of making sure we meet your expectations ... all the time, every time.

Our diversified portfolio of commercial projects includes work for both the public and private sector.

Our professional field and office staffs are dedicated to meeting your goals. We welcome this opportunity to demonstrate our abilities and expertise.

© F. H. Myers Construction, Inc. - All Rights Reserved Redesign by Automatic FHMNet

The General Conditions is published quarterly by the F. H. Myers Construction Corp.
Please visit our new website at: www.fhmyers.com



520 Commerce Point
Harahan, LA 70123
504-734-1073
504-734-1099 fax

“Building Satisfaction From The Ground Up”

www.fhmyers.com