

## St. Bernard Port, Arabi Terminal Relocation of LISCO



The new 73,000 square foot warehouse, 2,324 square foot stacker shed, 2,670 square foot boiler foundation, and all 116,000 square feet of 12 inch thick concrete paving has been completed.

We are proud to say that it is an honor having completed our third project at the St. Bernard Port Authority, which was a success for all parties involved. A special thanks to Ted Roche of the St. Bernard Port and all of their staff, as well as, all involved from NY & Associates.

The new facility is a magnificent upgrade for Robinson Lumber, and we wish them all the best.



*Featured Project:*

- St. Bernard Port/LISCO Relocation

*Completed Projects:*

- St. Charles Surgical Hospital

*Current Projects:*

- Visitation of Our Lady
- D. W. Rhodes Funeral Home
- Elmwood Towers
- Slidell Municipal Center, Building One

*From the President*



# UNDER CONSTRUCTION

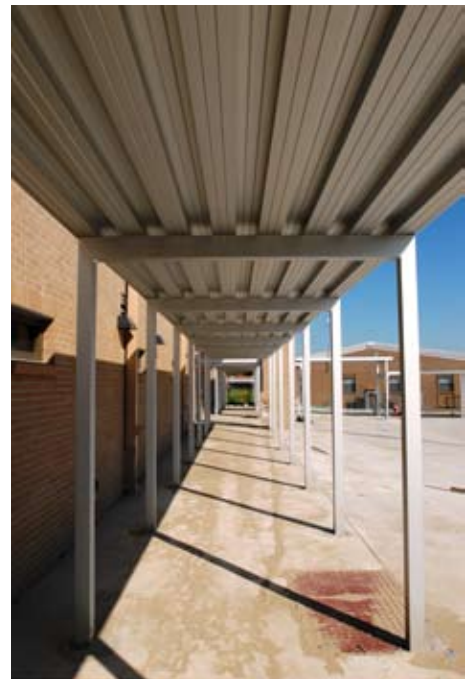
## Visitation of Our Lady



Construction on the new gymnasium and multipurpose building for Visitation of Our Lady is in the "home stretch." The following is just a snapshot of all the finishes currently in place.

We are in the punch list phase of the 2nd floor where all nine of the classrooms are complete. This will all flow directly through the 5,000 square feet of pre-kindergarten area, kitchen, lobby, bathrooms, and meeting area located in the southeast corner of the first floor. The finishes in the gymnasium are also ongoing and consist of the basketball and volleyball flooring, as well as the 5,000 square foot stage area.

Visitation of Our Lady's Cajun Festival is moving back into town on April 24th, and we are pulling out all the stops so the school can utilize the new facility for the biggest event of the year.





# UNDER CONSTRUCTION

"The General Conditions"

First Quarter 2009

## D. W. Rhodes Funeral Home



Over the past several weeks, the construction on the building's interior and exterior has made significant progress. On the interior, all of the walls at the first and second floors are constructed and all mechanical and electrical rough-in's are completed. Drywall activities are well underway and preparation for finish paint is in progress. The parlor rooms and lobby areas have recessed ceilings, and the framing at these ceilings is nearly complete. We are preparing to construct the main wall of the Chapel, which will include plaster artwork and decorative pieces that were recovered from the original building. Two sets of interior stairwells will be installed within the next few weeks.

On the exterior of the building, the restoration of the existing plaster walls and the new front entrance wall is near completion. The exterior of the building is being painted with elastomeric paint. New wood windows are being installed and several existing windows are being refurbished. Granite wall panels will accent a portion of the front entrance. Adjacent to the building is a "plaza" area, which will provide handicap access to the building. The front entrance and plaza area will be enhanced with the installation of a decorative guardrail. Two metal roof canopies providing drive-up access to the side lobbies, as well as the Chapel area, are currently in the framing stages. The paving at the parking lot is nearly 90% complete, and the sidewalks will begin shortly.



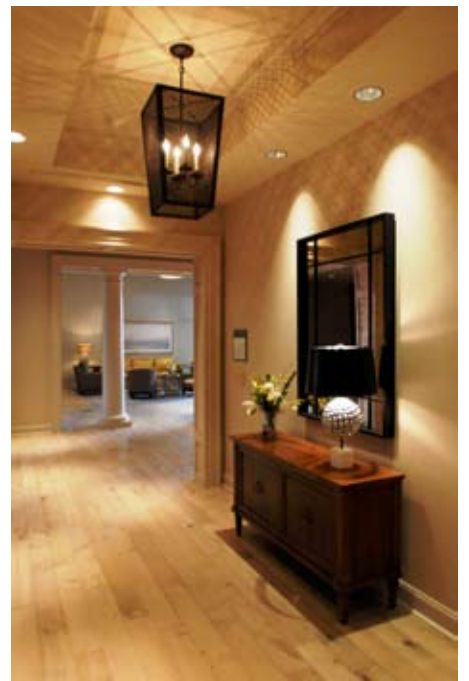
# COMPLETED PROJECT

## St. Charles Surgical Hospital



The St. Charles Surgical Hospital, formerly the Center for Restorative Breast Surgery, has been completed. The expansion of their existing facilities consisted of the renovation of a 2-story, 14,000 square foot existing historic building and the addition of a new 3-story, 23,000 square foot building.

The Center for Restorative Breast Surgery has built a reputation on providing state-of-the-art medical care in an elegant, convivial environment. This recent growth will not only enhance the current services offered but allow more patients to experience the expert care offered by the staff and medical team. The finished project is that of a five star luxury hotel with a distinctive appeal offered by its unique location, historical value, and design. Its boutique style comes with exceptional features utilizing the latest medical equipment and technology.





# COMPLETED PROJECT

"The General Conditions"

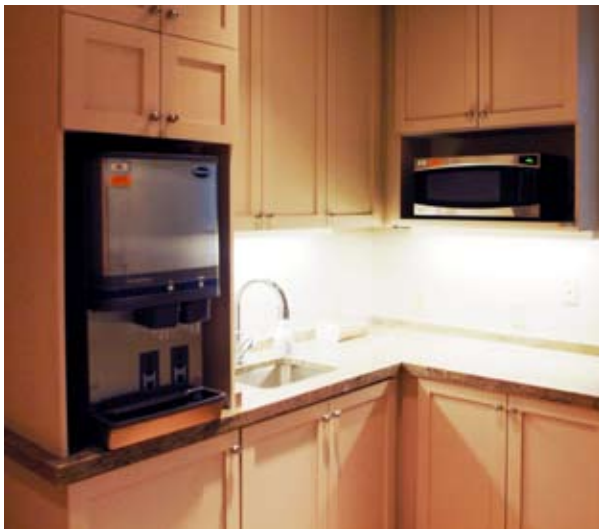
First Quarter 2009

## St. Charles Surgical Hospital

The hospital features six fully functioning operating rooms, seventeen patient rooms, and two patient suites. The OR's are equipped with audio/video medical teleconferencing capabilities, and the pre-op area is enhanced with overhead visual displays of outdoor scenes designed to provide the patient with a serene, calm environment. The interior of the facility consists of warm, natural colors, which create a clean, crisp gallery-like setting. Natural stone, hardwood floors, vinyl wall coverings and numerous pieces of artwork are featured throughout the facility.

Campo Architects facilitated the design of the project with MEP engineering provided by Associated Design Group, and structural engineering provided by Morphy-Makofsky, Inc. Chrestia, Staub, Pierce provided their interior design expertise, and the artwork was created and provided by Emery Clark.

F. H. Myers Construction Corp. would like to thank everyone involved with the project because their hard work and dedication was the primary reason that it was completed successfully.



# UNDER CONSTRUCTION



## Elmwood Towers

We are continuing with the renovation project for Elmwood Tower Phases II and III on Elmwood Park Blvd. in Harahan. The framing and drywall for the 4th and 5th floors was completed by the first week of April and finishes are starting.

Upon completion of the 4th and 5th floors in May, MMS will relocate personnel from the 3rd floor, and the next phase will begin. We will also commence work on the mechanical and front entry addition in the next 30 days.

This is our second project at Elmwood Towers, and we look forward to the successful completion of this project in September, 2010.



## Slidell Municipal Center, Building One

As of February 25, 2009, we have broken ground on the new Slidell Municipal Center Building One. The building "foot print" totals 32,970 square feet and will house many sectors of city government.

The first floor of the building is strictly a lobby for the stairs and elevator rising to the second and third floors of the building. The second floor will be city accounting, finance, and administrative offices. Moving up to the third floor will be the council chambers, council offices, as well as, the city attorney's office.

We are excited about making this project a success for the City of Slidell along with everyone at Sizeler Thompson Brown and REK Architects.





# FROM THE PRESIDENT

## "A Time to Stand Up"

The Congress is on the move again to cause havoc in the business community across the country. They have labeled this program as "Employee Free Choice Act" (H.R.1409 & S.560). It is very interesting how the title of these bills is designed to disguise the truth. One would ask, "How could anyone vote against Employee Free Choice?"

The basic fact is that these bills are designed to eliminate your private right to vote. The foundation of this legislation is to have employees vote in a public arena facing organized labor representatives as they make a choice. Since the inception of organized labor, employees who choose to have an election, have had the right to vote in private without any interaction with either their employer or organized labor representatives. So why the change after 60 years? There is a multitude of reasons.

At the forefront is the decreasing rates of organized labor across the country. In the construction industry, over 85% of the work is not being performed by "merit shop" contractors. In addition, over the past 30 years employers have recognized the value of their employees and how important they are to the success of the company. Hence, these employees now have benefit packages that include health insurance, 401K matching contributions, sick leave, vacation, and bonus programs designed for exceptional performances. The business community has changed from the "sweatshops" of the past.

Can you imagine voting for the Presidential candidate or elected officials sitting across from them or their representative in an open forum? This is exactly what EFCA will do for all employees who call for an election in respective companies across the country. The private ballot will be gone! Intimidation and coercion will rule again.

The business communities around the country are again being threatened by governmental bureaucrats who want to interfere with the "free enterprise system" without any knowledge of the facts.

The construction industry across the country has made great strides in the past 30 years. Our associations such as ABC (Associated Builders and Contractors) have assisted member firms in training and educational programs to improve our workforce. Work stoppage and strikers are a thing of the past. Our employees are able to be cross trained to increase their value to the company. Our teams are cohesive; field supervision and office personnel are aligned with company goals and objectives to deliver a better product for our clients.

We need everyone's support to stop this bill in Congress. Everyone needs to control their Congressman and clearly explain a vote in favor of this legislation will lead to their demise in the next election.

**...eliminates private  
right to vote.**





WELCOME

Quality and Integrity by Professionals

Home | Company Profile | Projects | Employment | Contacts | News & Info | Resources | Featured Project

## Building satisfaction from the ground up

**Ask the clients, architects, and engineers  
we've worked with since 1987.**

From day one we've made a conscious effort to make every project a pleasurable experience for each of our clients. It's simply a matter of making sure we meet your expectations ... all the time, every time.

Our diversified portfolio of commercial projects includes work for both the public and private sector.

Our professional field and office staffs are dedicated to meeting your goals. We welcome this opportunity to demonstrate our abilities and expertise.

© F. H. Myers Construction, Inc. - All Rights Reserved Redesign by Automatic FHMNet

The General Conditions is published quarterly by the F. H. Myers Construction Corp.  
Please visit our new website at: [www.fhmyers.com](http://www.fhmyers.com)



520 Commerce Point  
Harahan, LA 70123  
504-734-1073  
504-734-1099 fax

*“Building Satisfaction From The Ground Up”*

[www.fhmyers.com](http://www.fhmyers.com)