

D. W. Rhodes Funeral Home



This renovation project is complete, and the transformation of the funeral home is spectacular. The main goal of the project is the restoration and inclusion of various historical components, therefore, the building marries the new with the old in a very classy style.

During the last few weeks of the project, the focus on the exterior building components have been the two canopies, which are attached to the building, the concrete stamping at the front porch, installation of ornamental guardrails, and the concrete staining and scoring of the Plaza and Load-Out area. One of the canopies will provide a “drive-thru” area for the funeral home vehicles that will allow visitors to enter into one of the main lobby areas. The second canopy area is positioned behind the Chapel to also provide a covered area for the guests of the funeral home. The Rhodes family has added high quality finishes to their front porch entrance, as well as, the Plaza and Load-Out area. The front porch consists of a random slate patterned concrete stamping, which compliments the attractive marble Wainscot panels on the face of the building. The concrete at the Plaza and Load-Out areas will be stained and scored with a running bond pattern. Ornamental guardrails, which incorporate a design developed by the Owner, are installed around the perimeter of



Featured Project:

- D. W. Rhodes Funeral Home
- Visitation of Our Lady

Current Projects:

- Elmwood Towers
- NOLA City Bark
- Slidell Municipal Center, Building One

From the President

FEATURED PROJECT

(continued) D. W. Rhodes Funeral Home

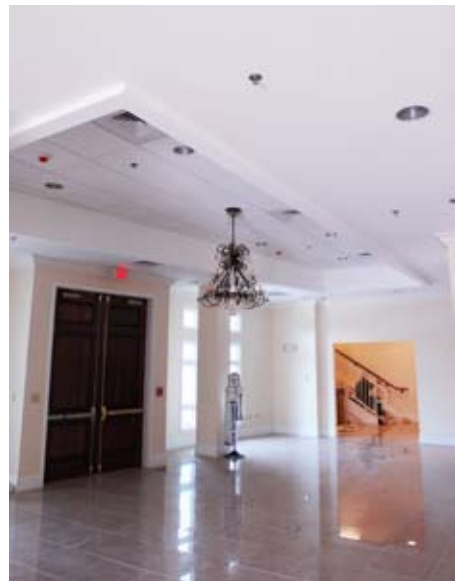


the front porch and Plaza area.

The building's interior is truly stunning with numerous chandeliers throughout the lobbies and main Chapel area. Operable partitions define the space for the Parlor Room with all included recessed ceilings. The funeral home's arrangement room includes slat walls that will allow the Owner to display various products related to their business. The Chapel area, which includes a magnificent plaster proscenium wall, is the showcase of the funeral home. This plaster wall incorporated many of the original plaster pieces salvaged after Hurricane Katrina. The large crystal chandeliers hang from the high Chapel ceiling and provide an inviting ambiance. The floors throughout the building consist of tile and carpet, which transition nicely between the lobbies, restrooms, offices, and Parlor Rooms.

The Chapel area has dark wood flooring that blends with the pews.

We look forward to the dedication of the funeral home, as this will be a spectacular day for the Rhodes family and the City of New Orleans.



UNDER CONSTRUCTION

Elmwood Towers

We are continuing with the renovation project for Elmwood Tower Phases II and III on Elmwood Avenue in Harahan. The 4th and 5th floors were completed in May. Demolition for the 3rd floor will start the 1st of July.

Work has started for the mechanical building that is being added to the West side of the building, as well as, the new entry addition being added to the South side of the building. The pilings for both additions are complete, and the foundation work will continue through July.



NOLA City Bark

This past May, officials from City Park along with other dignitaries and community supporters, attended the official ground breaking ceremony for the new City Bark Dog Park. This first of its kind, large-scale dog park is located in our beautiful City Park behind Poppas Fountain. This location was selected due to its accessibility and wide open spaces. Additionally, with City Park being a regional park, it is centrally located for all citizens in the River Parish Region. Construction is well underway, and the anticipated opening for the Dog Park is late fall of this year.

This project was designed by New Orleans' animal architecture veteran, Ace Torre and his team at Torre Design Consortium. Torre was able to bring the experience of designing more than 35 zoos and aquariums around the world, including local Audubon projects and the new habitat for Mike the Tiger at LSU, to create a much needed facility for dog owners in our area.

When completed, the Park will consist of a "howdy gate," which is a small space between the two sets of fences, where dogs can be introduced in a supervised setting. Existing trees with the planting of new additional

trees will provide shade during those hot, dog-days of summer. There will be covered areas, restrooms, seating, water fountains for both the four legged and two legged visitors, sections for big dogs and a separate section for small dogs, and dog wash stations to bathe the dogs prior to transporting them home from the Park.

Our firm is proud to donate our construction management services to this important project and participate in making this facility a success. This will add another unique element to our city and provide enrichment and recreation for the canines and their owners in our metropolitan area.



COMPLETED PROJECT

Visitation of Our Lady



Construction on the new multi-purpose building for Visitation of Our Lady is complete. As of May 21, 2009 the building was dedicated Padre Hall II "The Deuce" in the name of the founding pastor, Msgr. Paul J. Richard.

The Visitation Children's Choir opened the ceremony with the singing of the National Anthem. Following the Children's Choir was the Mistress of Ceremony/Special Guest, Ms. Melanie Hebert, Anchor at WDSU-TV.

She is an Alumnae of Visitation and is still currently involved in the schools' progress. The ceremony proceeded on with several readings, the Blessing of Padre Hall II by Fr. Mike Kettenring, and closing remarks from Mrs. Carolyn A. Levet, M.Ed, Principal of Visitation of Our Lady School.

The completed 32,122 square foot facility includes a gymnasium with six retractable basketball goals and sleeves for volleyball courts. Included in the gym are two brand new



From Left to Right: *Martin Steib, Project Manager; Ryan Myers, Chief Estimator; Fred H. Myers, President; Theresa Harris, Administrative Assistant; and James "Blackjack" Roberts, VP of Field Operations*

COMPLETED PROJECT

"The General Conditions"

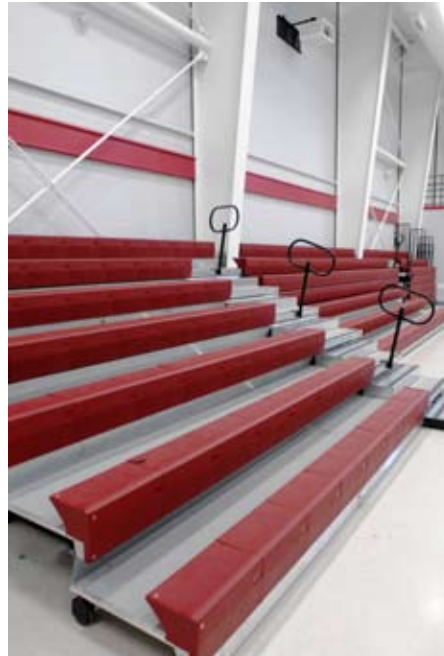
Second Quarter 2009

(continued) Visitation of Our Lady

remote controlled scoreboards and a stage complete with curtains, as well as, sound and lighting technology for theater and sporting productions. Pre-Kindergarten 3 and Pre-Kindergarten 4 will be housed on the first floor along with meeting rooms, storage rooms, and a commercial kitchen.

The second floor of "The Deuce" has a CYO room and six brand new classrooms for 3rd and 4th graders. In addition to the original design, we have also included a natural gas generator to power the entire east wing of the building, in order to house members of the clergy in times of need.

F. H. Myers would like to personally thank Fr. Mike Kettinger, Carolyn Levet, Gary Paine (building committee chair), Greg Mascari of the Archdiocese of New Orleans, Bill Argus and Jerry Harris of Argus Architecture Engineering, as well as, all of our consultants for the hard work and dedication they put into making this project a success.



UNDER CONSTRUCTION

"The General Conditions"

Second Quarter 2009

Slidell Municipal Center, Building One



Construction on the new Slidell Municipal building is progressing at a great pace; it is moving towards the halfway mark. All structural steel framing has been erected and the second and third floor decks have been poured. The exterior metal stud work, sprinkler rough in, and HVAC rough in are also underway.

The biggest milestones we will be working towards in the third quarter are completing the roof, as well as, the exterior façade of the building, including the hurricane resistant storefront glass.

Completion is on schedule for February 2010.



FROM THE PRESIDENT

"The General Conditions"

Second Quarter 2009

"Building Satisfaction from the Ground Up"



In 2005, shortly after Hurricane Katrina, our firm partnered with the Rhodes Family to renovate their damaged funeral home facility located on Washington Avenue in New Orleans. The family had used this site as their premier business location for over 35 years.

The building was constructed in 1926 as the Tivoli Theater. The structure still has many of the original plaster embellishments. The rear of the building contained the high bay to accommodate the "fly" for the movement of sets and stage curtains. The front of the stage area had a plaster proscenium with integral detailed capitals. The original frieze was still intact on the buildings facade, and the projection room on the second level where the balcony was located remained intact as if it had not been touched for 70 years.

In the years that followed the hurricane, we worked with the Rhodes family through various phases of the project. Our first challenge was the demolition and cleanup of the storm damage. We then focused our efforts on selecting an architectural firm. Following the selection of WHL Architecture, we were able to work as a team on the design, layout, fixtures and permitting. The final design, after many long hours, enhanced and improved the level of efficiency in the delivery of their services to their clientele.

On Tuesday, July 21, 2009, our office staff was invited to a private tour of the completed project. Our assumption was that the Rhodes family desired to allow our staff the opportunity to view the finished project prior to opening the facility to the public. We were surprised to find the intent was not what we expected. Their purpose was two fold. First, to tell all of us the 125 year history of the Rhodes family and to introduce us to the fourth generation that was now entering the business. The third generation consists of four sisters, Joan, Sandra, Stephanie and Kathleen and their brother Pete. These five have guided the business and kept alive the dreams of their father and grandfather for the past 30 years.

The second reason for the invitation was to thank our entire staff for their efforts and assistance over the past months. During this period, we opened our office to many project and family meetings. Our staff accommodated their needs for all of these occasions. Early morning breakfast and working lunches were common during the many planning sessions. They expressed their appreciation to each of our office and field staff for making them feel wanted and welcome. They stated that they felt like we were an extension of their family. They praised the long hours of work and dedication to making their business whole again. Each family member gave testimony to our teamwork, quality craftsmanship and professionalism.

Recently, the family received the prestigious Family Enterprise of the Year Award from Tulane University's Freeman School of Business. At the conclusion of the tour, we had the privilege of viewing the video of their family history that was presented at the award ceremony.

What an opportunity for our staff to experience, first hand, "what differentiates F. H. Myers Construction Corporation" from other firms. Our motto "Building satisfaction from the ground up" is not about bricks and mortar; it is about people and building relationships. Our firm is proud to have a high level of quality, professional employees that embrace and understand good business practices. Our people exude confidence and a willingness to set our firm apart from the average. They had the opportunity to hear and witness this acknowledgement of gratitude from a client.

Our team consists of high achievers filled with a positive and enthusiastic attitude not only focused on the end product but the manner in which it is delivered. It is that level of professional demeanor and humanity that sets the very corner stone of our foundation.

We thank and appreciate the Rhodes family for giving us this opportunity to work with them and for the efforts of all who made it a success.



WELCOME

Quality and Integrity by Professionals

Home | Company Profile | Projects | Employment | Contacts | News & Info | Resources | Featured Project

Building satisfaction from the ground up

**Ask the clients, architects, and engineers
we've worked with since 1987.**

From day one we've made a conscious effort to make every project a pleasurable experience for each of our clients. It's simply a matter of making sure we meet your expectations ... all the time, every time.

Our diversified portfolio of commercial projects includes work for both the public and private sector.

Our professional field and office staffs are dedicated to meeting your goals. We welcome this opportunity to demonstrate our abilities and expertise.

© F. H. Myers Construction, Inc. - All Rights Reserved Redesign by Automatic FHMNet

The General Conditions is published quarterly by the F. H. Myers Construction Corp.
Please visit our new website at: www.fhmyers.com



520 Commerce Point
Harahan, LA 70123
504-734-1073
504-734-1099 fax

“Building Satisfaction From The Ground Up”

www.fhmyers.com