

**St. Charles Borromeo**

Construction was complete on St. Charles Borromeo Education Center on April 30, 2010. The exterior parking lot containing 60 parking spaces, bus drop-off canopy, and walkway to the existing school building are the centerpieces of the new addition. Arched walls teamed with a Spanish architectural plaster system accentuate the exterior structure. The bus drop-off canopy incorporates Spanish clay tiles to match the rest of the campus' buildings, including copper gutters, downspouts, and scuppers. The added walkway allows students to move freely from the school building to the bus drop-off/ pick-up area during unfavorable weather conditions.

**Feature Completed Project:**

- St. Charles Borromeo

**Current Projects:**

- Elmwood Towers
- Chateau Carre Apartments
- Slidell Municipal Center, Building Two
- Academy of the Sacred Heart
- Jefferson Parish Sheriff's Office, 4th District

*From the President*

The new addition to the school building contains 7 new classrooms, a teacher's lounge, administrative area with principal's office, and elevator to the existing second floor classrooms. All school operating personnel are set to occupy the new addition for the upcoming school year, which kicks off the first of August.

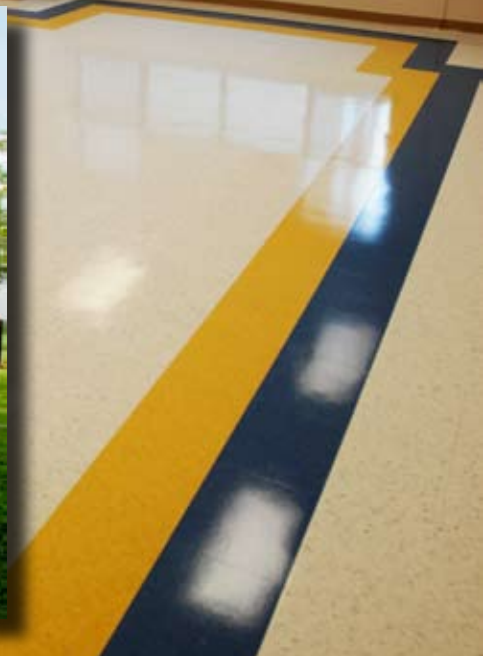
F. H. Myers would like to express our great pleasure in once again working with Mr. Ronald Rodrigue and Father Harry of the St. Charles Borromeo family, including the project's architect Mr. John Campo.

# COMPLETED PROJECT

"The General Conditions"

Spring 2010

## St. Charles Borromeo (continued)



# UNDER CONSTRUCTION

## Chateau Carre Apartments

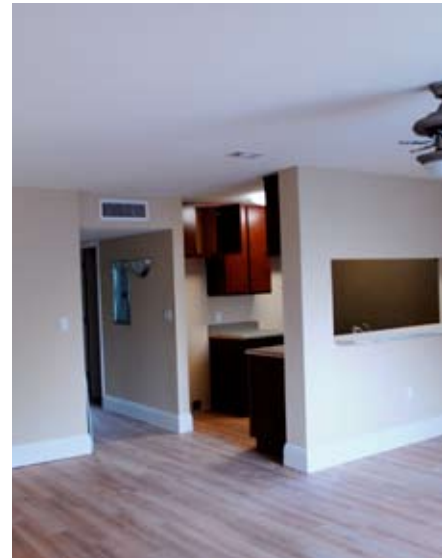


The work on the renovation to the Chateau Carre Apartment complex has progressed quite a bit and the finish line is near. There are two model units currently being shown to the public, and the owner's pre-leasing operations have started.

We have completed all of the mechanical, electrical, and plumbing rough-in on both buildings and installed nearly all of the drywall in the apartment units. In Building A, we are installing the finishing touches and are scheduled to turn the building over to the owner for occupancy in late August. The south parking lot has been topped with new asphalt, and the steel fencing installation has started. The elaborate landscaping work inside the courtyard areas has also started and will be a key feature in the overall look of the finished product.

Both the owner, Renaissance Neighborhood

Development Corp, and the architect, L. Dow Oliver & Associates, have played instrumental roles in getting this project close to its completion point, and F. H. Myers is appreciative of their efforts. We are scheduled to complete the entire complex by the end of September.



# UNDER CONSTRUCTION

## Slidell Municipal Center, Building Two



We are currently at the "halfway" mark in constructing our second municipal building for the City of Slidell.

All structural steel has been erected and exterior metal stud framing is complete. Completion of these activities has allowed the following to commence: interior framing, mechanical/electrical/plumbing rough in, plaster work on the building's exterior, metal roofing, and concrete work for the slab and parking underneath the building. The colors of the building exterior will complete the complex, introducing a new color and including colors from building #1, as well as City Hall.

Completion for January 2011 remains on schedule.



# UNDER CONSTRUCTION

## Academy of the Sacred Heart



Construction is well underway on the Academy of the Sacred Heart's new Arts and Athletics Facility.



At the new gym building, the first phase of the foundation is nearing completion and the form erection/pouring of the nine 40 foot tall concrete columns along the front of the building is underway. These concrete columns are one of the great architectural highlights of the new building. Some special features of the columns are that they start roughly four feet below grade and taper all the way up to the roof line, galvanized steel plates are embedded on all three sides of each column that support steel members for the mezzanine, second floor, and roof top level, and at the front of the column a runnel is designed for the flow of water draining from the roof. Phase one of steel erection, which encompasses the front of the building up to where the gym courts begin, commenced the last week in July.

As the new gym building foundation progresses, work inside and outside of St. Joseph's Hall is ongoing. The plumbing rough in is complete, and the interior concrete footings/trenches are poured. Ductwork on the second and third floors is in the process of being hung. Metal stud framing, as well as, electrical rough in are just two of the many components progressing inside of the building. On the exterior, the new roof is installed and "dried in" and awaiting delivery of all metal trim. Completion of the project remains on schedule for the Spring of 2011.



# UNDER CONSTRUCTION

## Elmwood Towers

The first floor is currently under construction at Elmwood Towers. Demolition for the first floor commenced the first of June, after the tenant completely moved onto the second floor, which was completed at the end of April. Overhead rough in is ongoing, while interior walls are being constructed. The first floor includes several large training and conference rooms that incorporate a great deal of electrical and data wiring for audio and visual, special light dimming, and low voltage systems that make this floor the center piece of the remodeled space.

During this phase, F. H. Myers will also deliver the new front entry structure located on the South end of the building. The new elevator included in the front entry is scheduled to be complete within the next 45 days. The first floor also includes a total remodel of the existing lobby space that is being used at all times by the building's tenant. The lobby will include a new wood veneer wall, wood ceilings, as well as a bullet resistant security guard desk.

Construction for the first floor will be complete by November 1, 2010, which will complete the 10 story remodel of this building.



## Jefferson Parish Sheriff's Office, 4th District

In April, F. H. Myers Construction Corp. was awarded the Jefferson Parish Sheriff's Office 4th District Station, located in Metairie adjacent to Zephyr Field. The 4,700 square foot, 2 story office building includes first floor parking and storage with office space and conference rooms for the Sheriff's Office on the second floor, as well as a new 31,000 square foot parking area for the department, with a contract amount just over 3 million dollars. The exterior skin of the building will include metal wall panels and face brick that will match the façade of Zephyr Stadium.

Construction on the structure commenced in early June at a feverish

pitch with the pilings being driven for the foundation. Currently, the slab on grade is being poured with steel expected to hit the jobsite in the third week of August. The overall duration for the project is approximately 9 months with construction expected to be complete around February 2011. Mr. Byron Champagne is the Project Superintendent, and Mr. Brian McLawchlin is the Project Manager.

F. H. Myers is excited about this opportunity to work with the Sheriff's Office, as well as another successful endeavor with Sizeler Thompson Brown Architects.



# FROM THE PRESIDENT

## Community

The economic times place real difficulty on the non-profit organizations that serve and assist the less fortunate in our community. Over the past year, our employees have contributed both time and funds to various foundations to help them with their important mission to enhance the lives of those in need and to improve our community.



Our partnership with Volunteers of America Greater New Orleans (VOA) has spanned many years. We have been a proud sponsor for their annual golf tournament dedicated to specifically assist their adoption program, which has been a mutual success. Through this program, many children in our community have been placed with welcoming parents. The placement of these children, as well as those in foster programs, has allowed so many of them to overcome numerous obstacles in life. In addition, several of our employees, friends, and business associates have been working with VOA's new program, "Reach for the Stars". This is the second year of this major fundraiser. Last year the program had hundreds of business leaders and friends support this ongoing program. VOA tends to the lives of over 60,000 people in our community. The budget cuts on the State and Federal levels have left a major shortfall in their annual budget. Through programs such as Reach for the Stars, the entire community can participate with any means affordable to help bridge these budget cuts. This year's breakfast program is scheduled for November 4, 2010. We welcome any of our friends and business partners to join us at our tables to help support this important program. If you would like to join us, please contact Mrs. Frances Roemer by phone 504-734-1073 or by email frances@fhmyers.com.

For several years, our employees, along with a corporate match, have made annual contributions to The United Way. This year, we contributed over \$4,500 to support their efforts in the Greater New Orleans area. These funds support activities that create opportunities for a good life for all members of our community by investing in programs that target community needs. The United Way works to provide a coordinated response so we can have a healthy quality of life, a strong workforce, and brighter economic future. They work every day to meet the ever-changing needs in the River Parish Region by supporting more than 100 health and human service agencies, providing job counseling and training, offering affordable childcare, helping the elderly, and assisting people with disabilities. They also provide disaster relief and much more right here in our own backyard.



Last year, we partnered with NOLA City Bark to provide management services, as well as contributions to the New Orleans City Park. We were successful in completing the first dog park in the New Orleans area. The facility features separate sections for large and small dogs, a wade pool, concrete walk paths, dog wash areas, restrooms and a comfortable environment for both animal and owner. The collaborative effort between our firm, NOLA City Bark and City Park produced a much needed facility for our community.



On October 7, 2010 we will be conducting our third annual golf tournament to benefit St. Michael's Special School. Our relationship with St. Michael's spans over twenty years. In 2008, we completed their new classroom expansion. Our golf tournament has created donations averaging \$35,000 to \$40,000 per year. The Fore! Kids Foundation has partnered with us in this venture and provided welcomed assistance and support. Last year we had approximately 120 golfers. Our goal this year is to maximize players and possibly have morning and afternoon tee times. We currently have flyers out in the community and again want to invite your continued support for sponsorships and golfers. If you want to sign up for our golf tournament, please contact Ms. Erin Shaw by phone 504-734-1073 or email erin@fhmyers.com.

**We thank our employees, friends, and business partners who have been the real players that have made all of these programs a success. Just like we work daily to improve our corporation, we expend the same effort to enhance and improve the quality of life in our community. All of these funds, every dollar, goes directly to each nonprofit.**

**It is our hope that you will help us keep the charity and services of these important and valuable entities alive for the sake of improving the quality of life and building a better community for all.**



WELCOME

Quality and Integrity by Professionals

Home | Company Profile | Projects | Employment | Contacts | News & Info | Resources | Featured Project

## Building satisfaction from the ground up

**Ask the clients, architects, and engineers  
we've worked with since 1987.**

From day one we've made a conscious effort to make every project a pleasurable experience for each of our clients. It's simply a matter of making sure we meet your expectations ... all the time, every time.

Our diversified portfolio of commercial projects includes work for both the public and private sector.

Our professional field and office staffs are dedicated to meeting your goals. We welcome this opportunity to demonstrate our abilities and expertise.

© F. H. Myers Construction, Inc. - All Rights Reserved Redesign by Automatic FHMNet

The General Conditions is published quarterly by the F. H. Myers Construction Corp.  
Please visit our new website at: [www.fhmyers.com](http://www.fhmyers.com)



520 Commerce Point  
Harahan, LA 70123  
504-734-1073  
504-734-1099 fax

*“Building Satisfaction From The Ground Up”*

[www.fhmyers.com](http://www.fhmyers.com)