



# COMPLETED PROJECT

## Hotel Monteleone

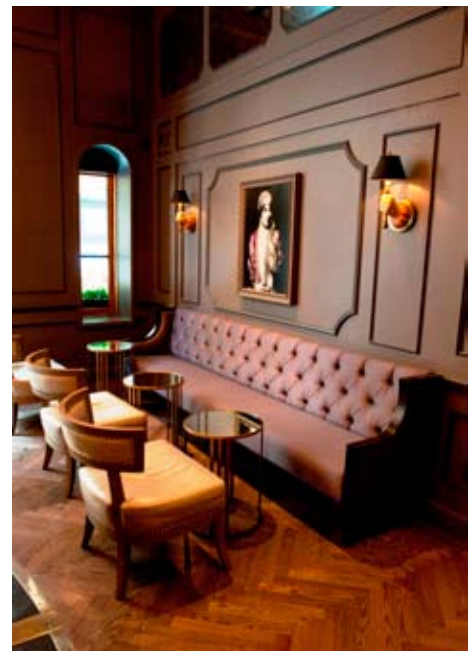
This past year, we completed a significant amount of renovations to the 125 year old Hotel Monteleone located in the heart of the French Quarter. The initial renovations at the Monteleone began in June of last year and ranged from the basement to the 17th floor, including the exteriors of the first floor, the 16th floor, and the 17th floor. The Queen Anne Ballroom, the Queen Anne Parlor, the Bonnet Carre Room, all mezzanine/second floor hallways, Suite 1600 and 1700, as well as the Riverview and Vieux Carre Meeting Rooms, were the first areas completed last year. Additionally, the building's exterior was refurbished with granite and new limestone at the first floor level along Royal and Iberville Streets. This work wrapped up in late fall, which lead into the commencement of the renovations to the Carousel Bar and new lounge.

The famous spinning Carousel Bar underwent a major renovation completed mostly in the month of November to guarantee the re-opening on December 1st for the holiday season. On December 30, 2011 the new lounge bar, where the old Hunt Room Grille once stood, opened as well.

During the month of May 2012, we proudly opened the Hotel's finest new addition, Criollo. The new restaurant flows openly to the lobby and to the new lounge. It also contains two brand new private dining rooms sectioned off by beautiful custom walnut sliding doors, in filled with bronze, and enhanced with antiqued mirrors.

If you choose to sit at the Chef's table in the main dining room, you will have a view of the expo kitchen complete with all new equipment including, an embellished brass commercial hood, a granite topped die wall, and a ceramic custom designed capture wall. Behind the scenes, the old kitchen now has all new mechanical equipment, lights, stainless steel walls, and lay in ceiling.

We would like to give special thanks to the late William Monteleone for giving F. H. Myers the opportunity to work in his magnificent historic French Quarter Hotel. We would also like to thank Richard Choate with SCNZ Architects for his design and administration throughout the entire project, and all hotel executive members without which we would not have been able to complete the project.



# COMPLETED PROJECT

## *Hotel Monteleone (continued)*

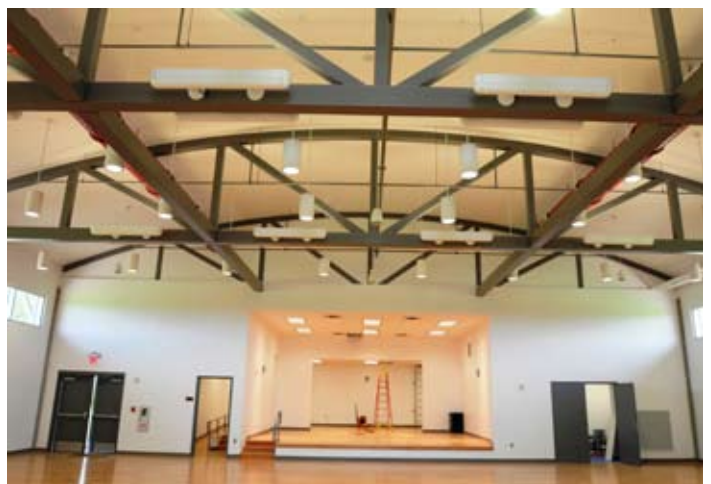


## *Braithwaite Auditorium*

The new auditorium in Plaquemines Parish is complete. This building is equipped with a generator platform and a first floor finish elevation of nearly 19 feet above grade. The focal point of the structure is the assembly room suitable for removable seating of up to 264 people. The stage is located at the center of the South wall of the assembly room with male and female green

rooms behind it. When entering the lobby from the porch, there is a concession stand/catering kitchen and restrooms.

We are very grateful for the opportunity to complete this project.



# UNDER CONSTRUCTION

## *Leson Chevrolet*



The 11,000 square foot Leson Chevrolet Show Room Addition Project will be completed by the end of this quarter. The past quarter efforts have been focused on completing the rough-in work and the finishes. In addition, the Owner approved several upgrades including custom casework, wood flooring, and additional lighting. A new back flow preventer also had to be added to the existing water line due to changes in the building codes since the original building was constructed. During this last month we will be concentrating on punch list, final cleaning,

owner training, and demobilization of the project site.

One of the main features of the New Image Program instituted by Chevrolet was the metal panel skin of the building. This architectural finish coupled with the curtain wall system resulted in a very striking showroom building. Overall, the finished product is going to be a huge success and makes F. H. Myers Construction, Fautleroy, Latham, Weldon, Barre Architects, and the owners of Leson Chevrolet very proud.

## *St. Bernard Courthouse*



As expected, the 23,000 square foot, two story, multi-use St. Bernard Parish Courthouse Square Project has been moving at a quick pace. We spent the first half of the year completing the structure, installing walls, ceilings, and mechanical, electrical and plumbing rough-ins. As we approach the end of this quarter, the project is transitioning from the rough-in phase to the finish phase. In the next few months we are wrapping up a number of exterior and interior items. On the exterior of the building, work will be concentrated on completing the roof, windows, stucco, sidewalks, paving, gates, handrails, and fencing. On the interior, our focus includes the terrazzo floors, doors, casework, grills, lights, ceilings, plumbing fixtures, detention equipment, and ceramic tile.

During the past quarter the Owner requested

# UNDER CONSTRUCTION

"The General Conditions"

Summer 2012

## *St. Bernard Courthouse (continued)*

a few upgrades to the project, which we were able to incorporate. The enhancements include upgrades to the security and video recording system, changing the flooring from carpet to terrazzo, and adding electrical items to accommodate the needs of the intended users.

The efforts for the next quarter will be focused on project completion. The finish trades will be completing the flooring, accessories, plumbing testing, electrical and mechanical equipment, finish painting, landscaping, and owner training. With the efforts of F. H. Myers Construction, Fautleroy, Latham, Weldon, Barre Architects, and Kyle & Associates, the project should be successfully completed by late summer.



## *Resurrection of Our Lord*



Construction of the Resurrection of Our Lord Multipurpose Building, located in New Orleans East, commenced on February 6, 2012 and has an expected completion date of February 10, 2013.

This 30,000 square foot pre-engineered metal building with a corrugated metal panel façade will sit on 11 acres of land and host a 17,000 square foot parking area. The building will be raised on circular concrete columns with the top of the slab at 7 feet above exterior grade, exceeding the required FEMA floor level heights. It is designed to withstand basic wind velocity of 130 mph.



The core of the building consists of a gymnasium with multiple functions including, but not limited to, a basketball court, a volleyball court, a performing arts facility, and an assembly facility. It also contains eight classrooms that are positioned on the outskirts of the pre-engineered metal building. The building is equipped with fully-prepared concession and ticket stands to accommodate the entertainment.

We are extremely thrilled with the opportunity to construct this beautifully designed facility for the students and parishioners of Resurrection of Our Lord School. I would like to thank Argus Architect & Engineering, the Archdiocese of New Orleans, and the entire F. H. Myers Construction team for a job well done thus far.

# NEW CONSTRUCTION

## JPSO 3rd District Station



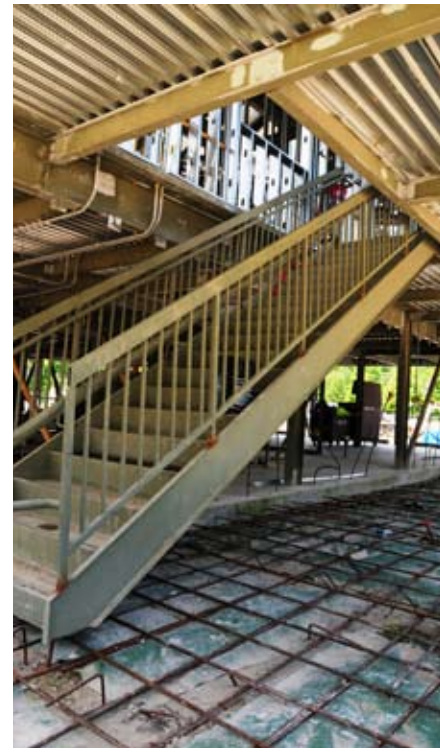
The Jefferson Parish Sheriff's Office Third District Station is located in Marrero, Louisiana, on Louisiana Highway 3134, near the Jean Lafitte National Historical Park and Wildlife Reserve. F. H. Myers Construction Corp. began managing this project on April 23, 2012 and will complete it at the beginning of October 2012.

The first floor exterior façade consists of St. Joe face brick with cast stone topping the brick columns, while the second floor façade consists of a hardie board cement siding. The front of the building will

be Colonial in style and have 1st and 2nd level porches, and the windows will boast both Bahaman and Colonial style shutters.

The 1st floor will be used for storage of JPSO vehicles and equipment, and the 2nd floor will consist of offices for the Jefferson Parish Officers, evidence storage, and a roll call meeting room.

F. H. Myers Construction Corp. is pleased to have the opportunity to construct their second Sheriff's Office in the last two years. We are fortunate to team up with the experienced design team of Sizeler Thompson Brown Architects, Huseman and Associates, and Schrenk and Peterson to build this beautiful facility for the Jefferson Parish Sheriff's Department.



## Notre Dame Seminary Renovation

Renovations to the Notre Dame Seminary began in January of this year. This project consists of two phases; each phase includes one half of the renovation of both the 2nd and 3rd floors within Shaw Hall. Over the past few months, we have made significant progress with the mechanical and electrical upgrades at the Seminary. In addition to the mechanical and electrical upgrades, the interior finishes at the dormitory rooms have been reconditioned, and the 2nd and 3rd floor communal shower and restroom facilities have undergone a complete renovation.

A new chiller plant will now service the two outside air handling units that feed individual fan coil units in each dormitory room, main corridors, and shower/restroom facilities. A new wet sprinkler system standpipe will be installed in each of the building's stairwells. The electrical system upgrade includes a new substation and panel replacements, new wire molding in each dormitory room, and a fire alarm system upgrade. The shower/restroom facility will include new showers, tubs, and fixtures along with resinous flooring. The dormitory room renovation consists of refinishing of the existing wood flooring, which was the subfloor to the existing carpet. New medicine cabinets and pedestal sinks will be installed, and walls will be re-painted.

Currently, we are nearing the completion of Phase 1 as the chillers



are being commissioned, and the interior finishes are in their final stages. We are also underway with Phase 2, starting with interior demolition and installation of the mechanical system in the attic area. Our goal is to complete Phase 2 by the end of August.

# FROM THE PRESIDENT

## Succession/Transition/Future

There are exciting changes occurring at F. H. Myers Construction Corp. This July, we will mark our 25th year in the local construction industry. We started the company in 1987 with just a handful of dedicated employees. Our mission was simple "to be the best at what we do" and good results would follow.

As we grew, we surrounded ourselves with individuals that have a passion for the business and a desire to be the best. Although we enjoy the execution and delivery of our services, the relationships we have developed along this 25 year journey are much more important and lasting. These relationships have created a strong foundation for the future of our company.

We are not only focused internally, but also externally, with involvement in the community. We have partnered with many construction associates, charities, and civic events to help the less fortunate and make our community better for everyone.

When I initially formed the company in 1987, I did not have a vision of becoming a "family-owned and operated business"; however, as time passed and our business grew, a need for the skills and talents of my son and daughter made it natural to seek their assistance. Rachelle started with our firm in September of 1996; Ryan followed in August 1998. During their employment, they worked in the field alongside our carpenters and superintendents and moved on to estimating and managing projects as their own business units.

As time passed, both Rachelle and Ryan became more involved with the day-to-day management and operations of our firm. In September 2004, we restructured the company separating estimating and project management. Rachelle was promoted to Vice President of Project Management and Ryan to Chief

Estimator. As our company continued to grow over the next eight years, many improvements to our processes were the direct result of their efforts.

Now as we enter our 25th year, we are excited to implement the succession plan we adopted over five years ago. Rachelle Albright has been appointed to the position of Chief Executive Officer (CEO) and Ryan Myers is President of our PreConstruction Services Division. Both are positioned to lead our company into the future.

I am also happy to announce that I will be assuming the role of Chairman of the Board. There are many opportunities and challenges facing the business and industry in our region. The need for seasoned professional experience during these times is critically important to any business. Our ability to continue to earn the respect and faith of our clients and business partners, while building on these relationships, remains the most important factor and a hallmark of our company's management style. As Chairman of the Board, I look forward to coaching our management team and continue our external activities in the community.

To our many clients, industry friends, and business partners, we extend our heartfelt thanks for the extraordinary opportunity we have had to work with you, both on a personal and professional level. The friendship and respect that you have shown our firm over the past 25 years continues to inspire us towards greater success.

As we move into the next chapter of our company, we look forward with the confidence that the best of F. H. Myers Construction Corp. is yet to come in the years ahead.



**Fred H. Myers**  
Chairman of the Board



**Rachelle M. Albright**  
Chief Executive Officer



**Ryan P. Myers**  
President of PreConstruction Services



WELCOME

Quality and Integrity by Professionals

Home | Company Profile | Projects | Employment | Contacts | News & Info | Resources | Featured Project

## Building satisfaction from the ground up

**Ask the clients, architects, and engineers  
we've worked with since 1987.**

From day one we've made a conscious effort to make every project a pleasurable experience for each of our clients. It's simply a matter of making sure we meet your expectations ... all the time, every time.

Our diversified portfolio of commercial projects includes work for both the public and private sector.

Our professional field and office staffs are dedicated to meeting your goals. We welcome this opportunity to demonstrate our abilities and expertise.

© F. H. Myers Construction, Inc. - All Rights Reserved Redesign by Automatic FHMNet

The General Conditions is published by F. H. Myers Construction Corp.  
Please visit our new website at: [www.fhmyers.com](http://www.fhmyers.com)



520 Commerce Point  
Harahan, LA 70123  
504.734.1073 phone  
504.734.1099 fax

*“Building Satisfaction From The Ground Up”*

[www.fhmyers.com](http://www.fhmyers.com)